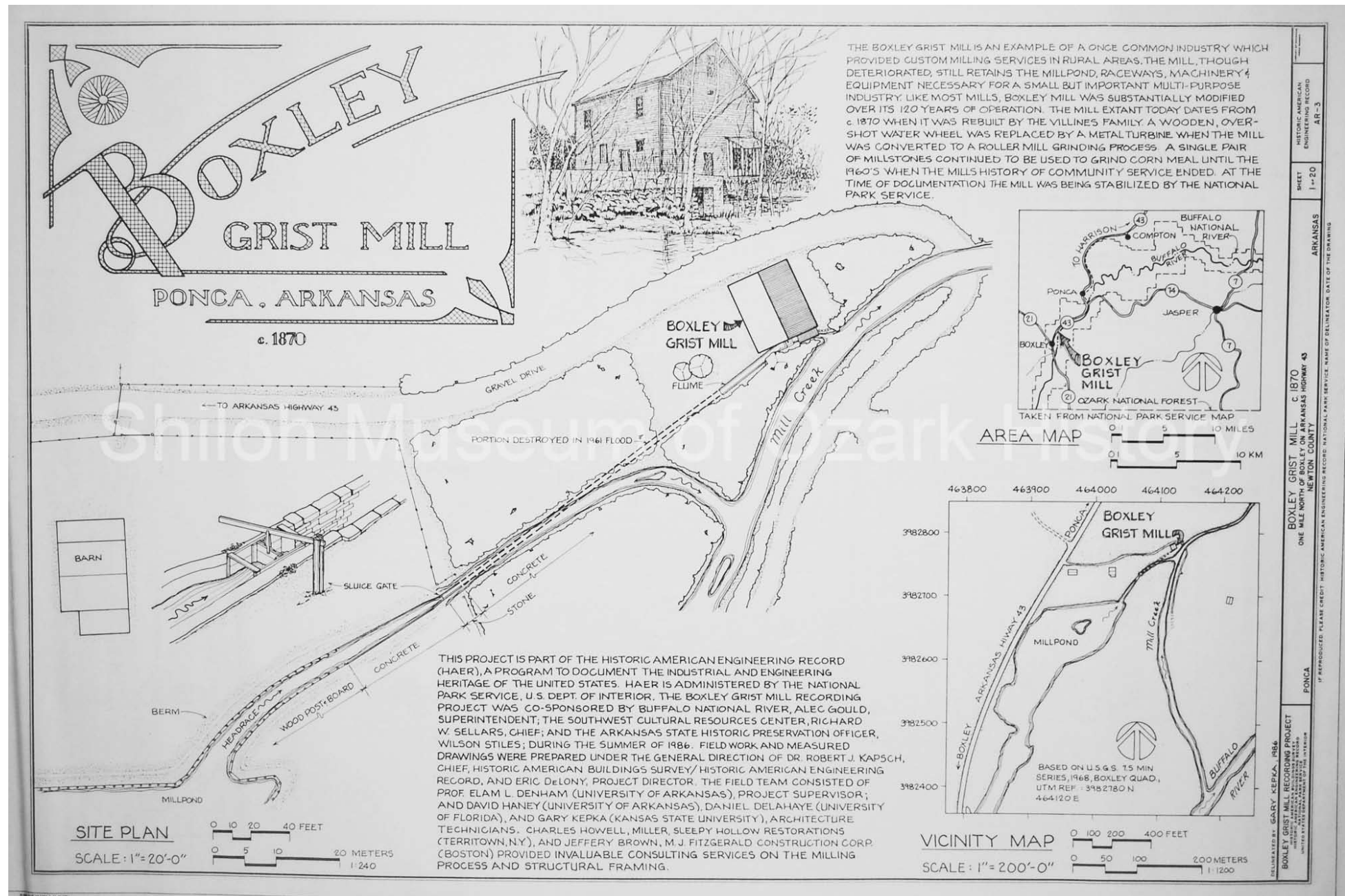


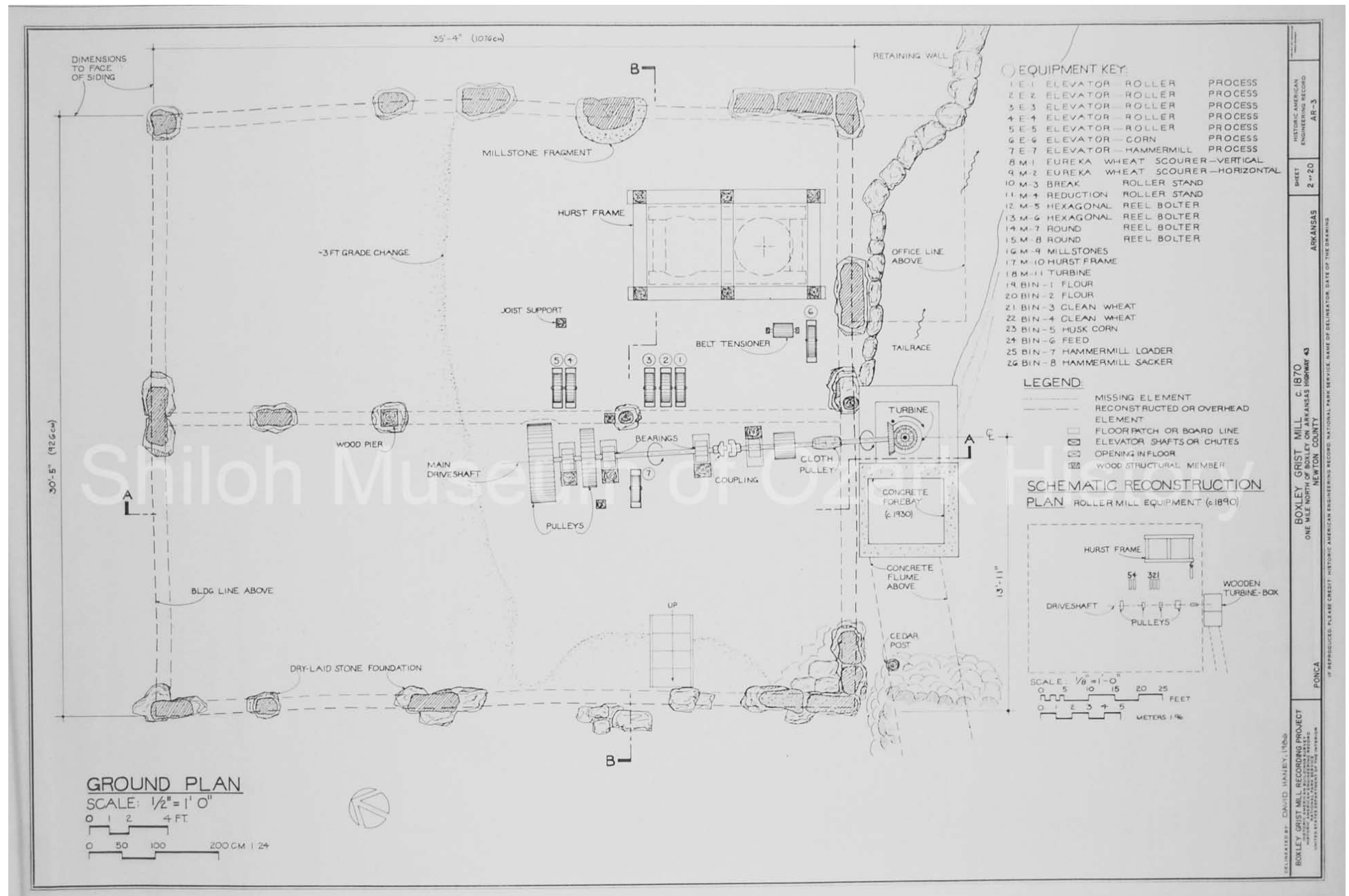
Boxley Grist Mill Recording Project, Boxley, Arkansas. Historic American Engineering Record, National Park Service.

Delineated by: Gary Kepka, 1986. David Quin Collection (S-93-135-2)



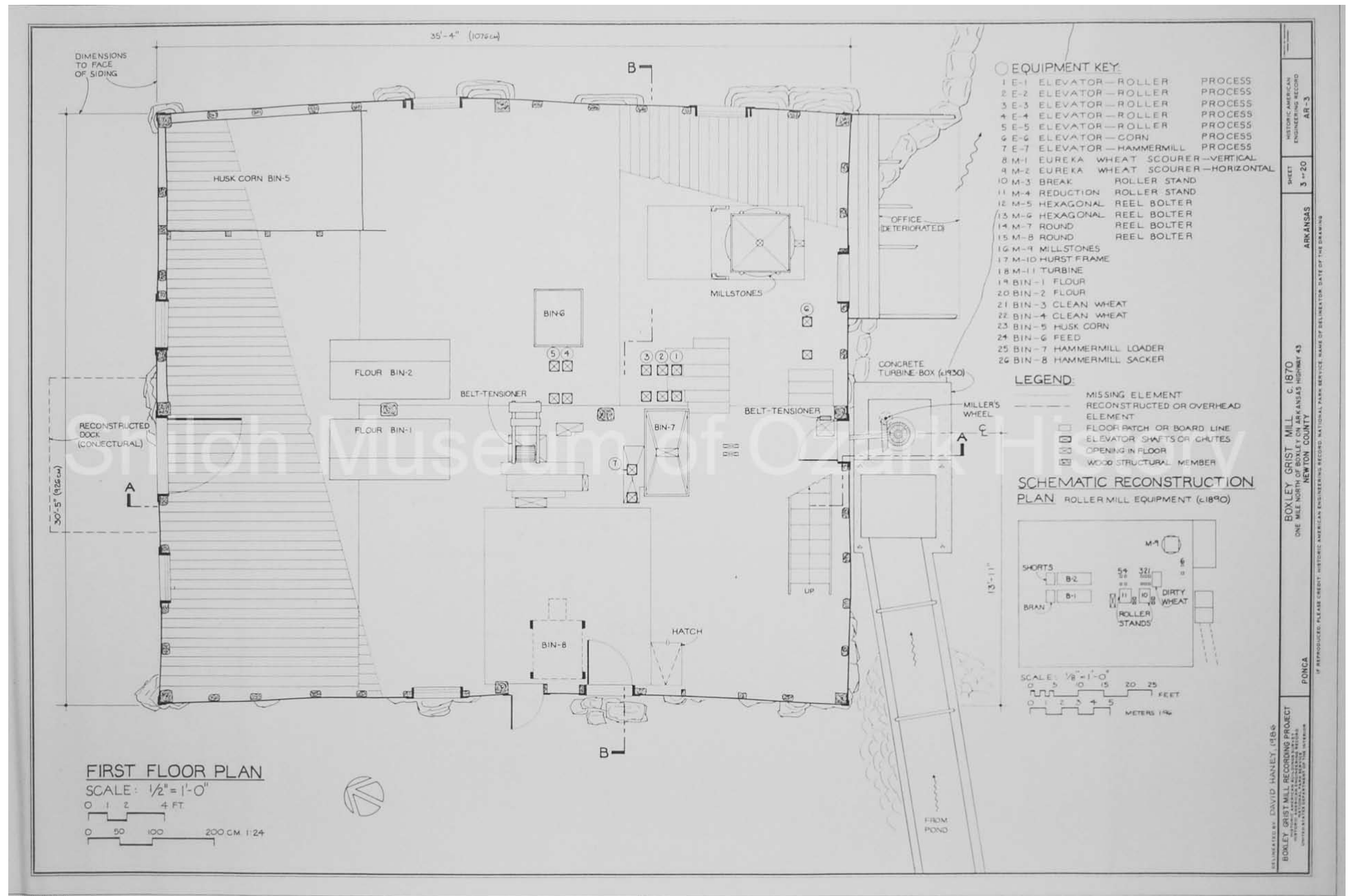
Boxley Grist Mill Recording Project, Boxley, Arkansas. Historic American Engineering Record, National Park Service.

Delineated by: David Haney, 1986. David Quin Collection (S-93-135-2)

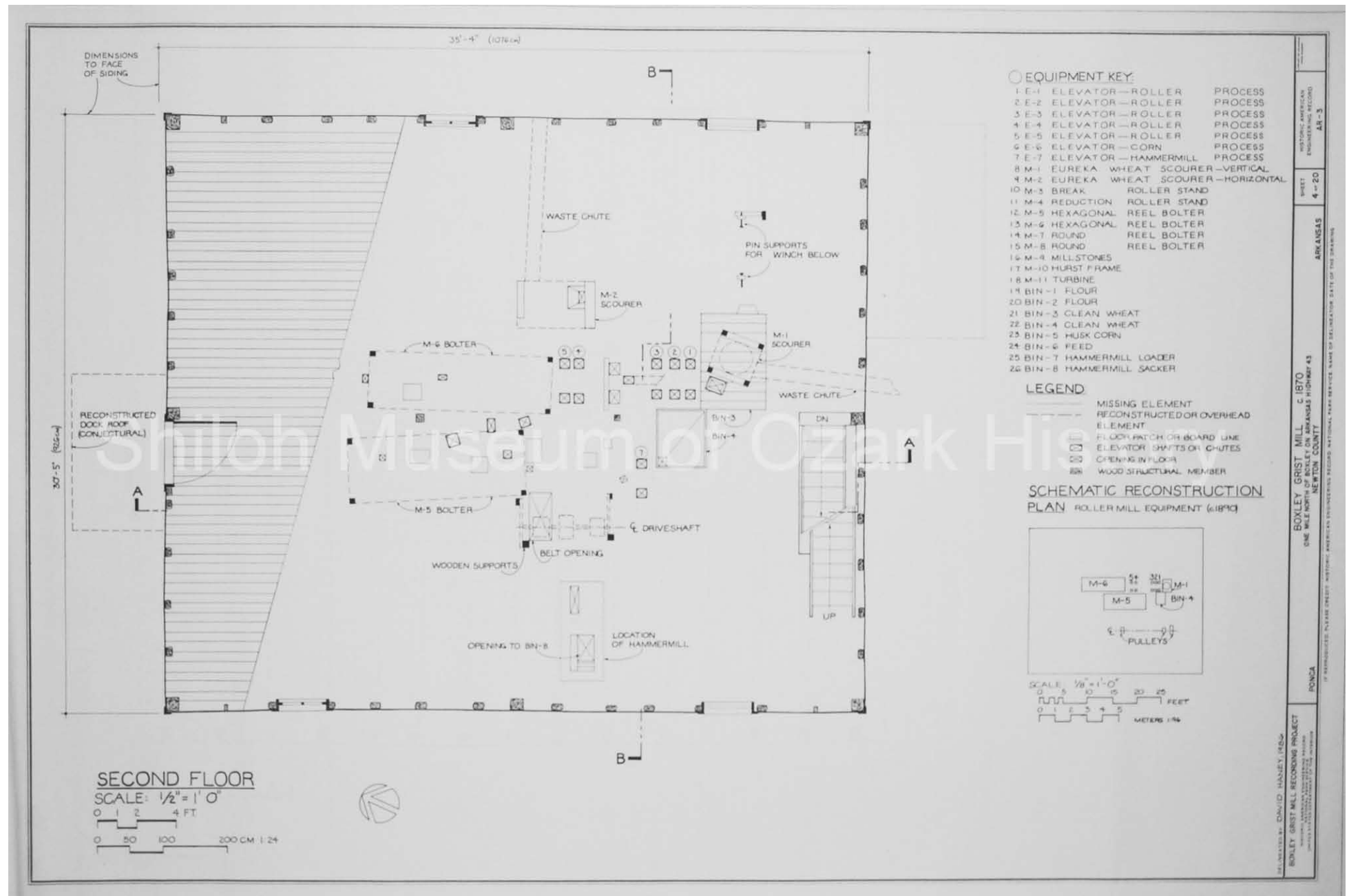


Boxley Grist Mill Recording Project, Boxley, Arkansas. Historic American Engineering Record, National Park Service.

Delineated by: David Haney, 1986. David Quin Collection (S-93-135-2)

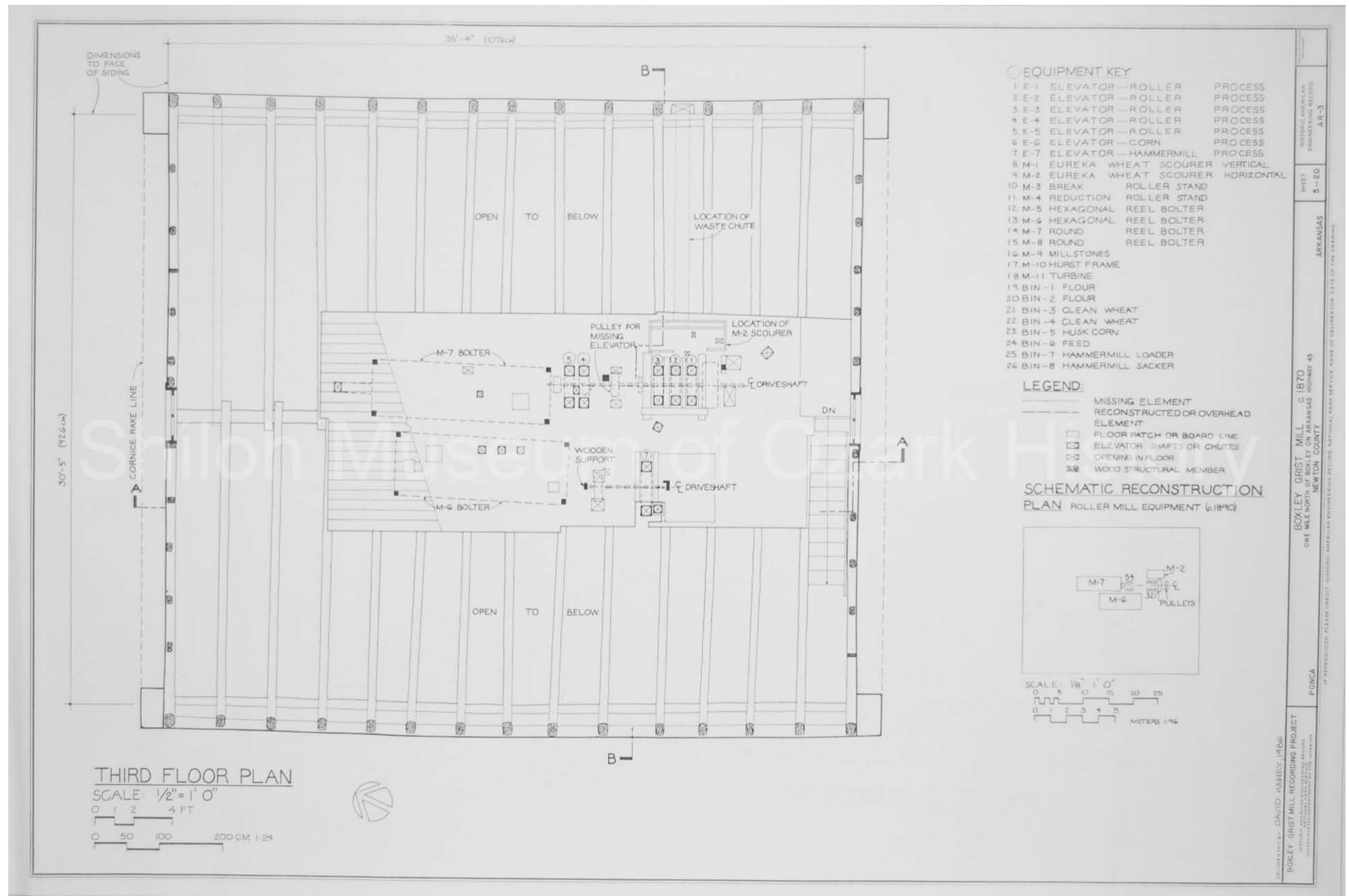


Delineated by: David Haney, 1986. *David Quin Collection (S-93-135-2)*



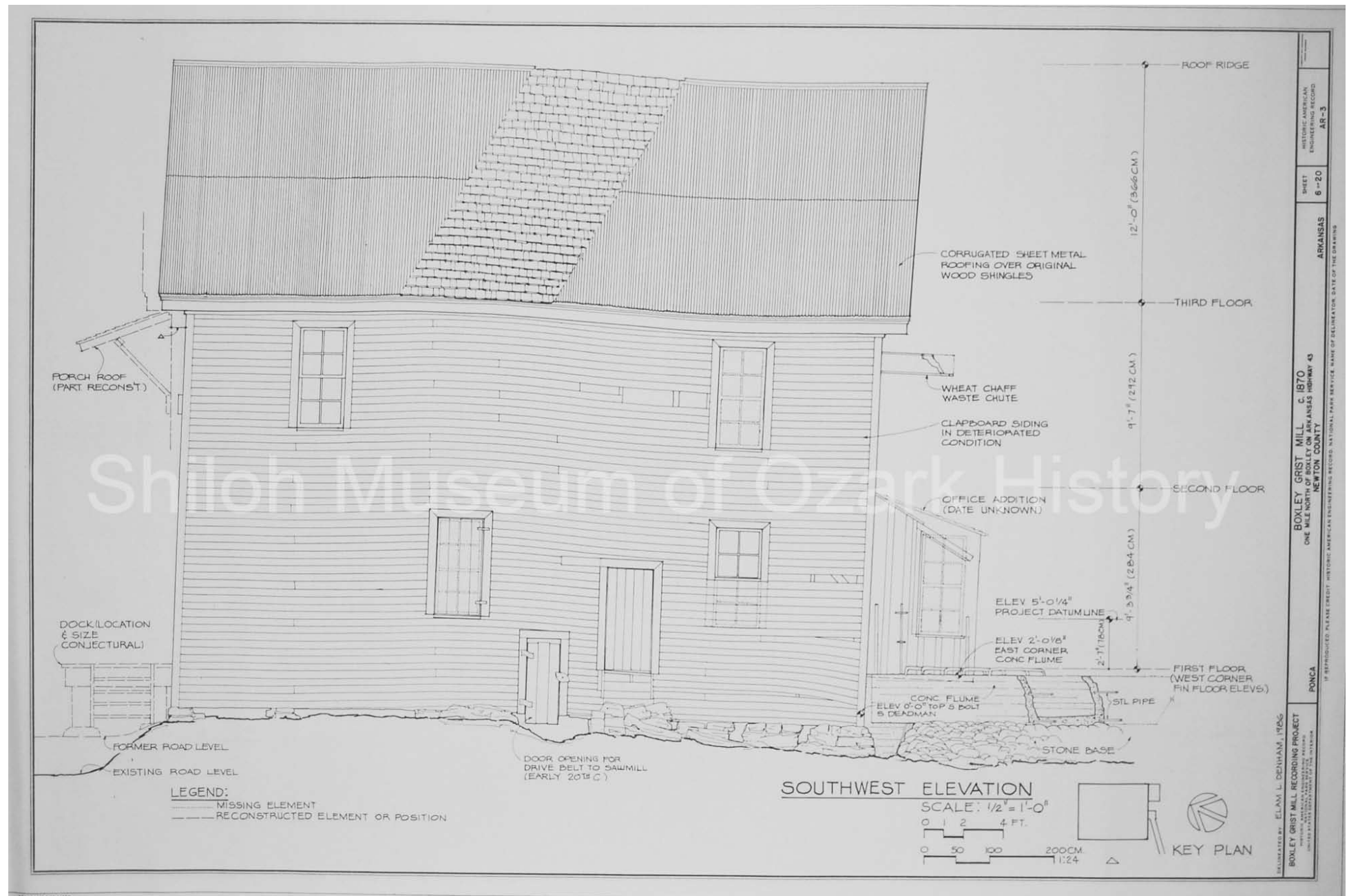
Boxley Grist Mill Recording Project, Boxley, Arkansas. Historic American Engineering Record, National Park Service.

Delineated by: David Haney, 1986. David Quin Collection (S-93-135-2)



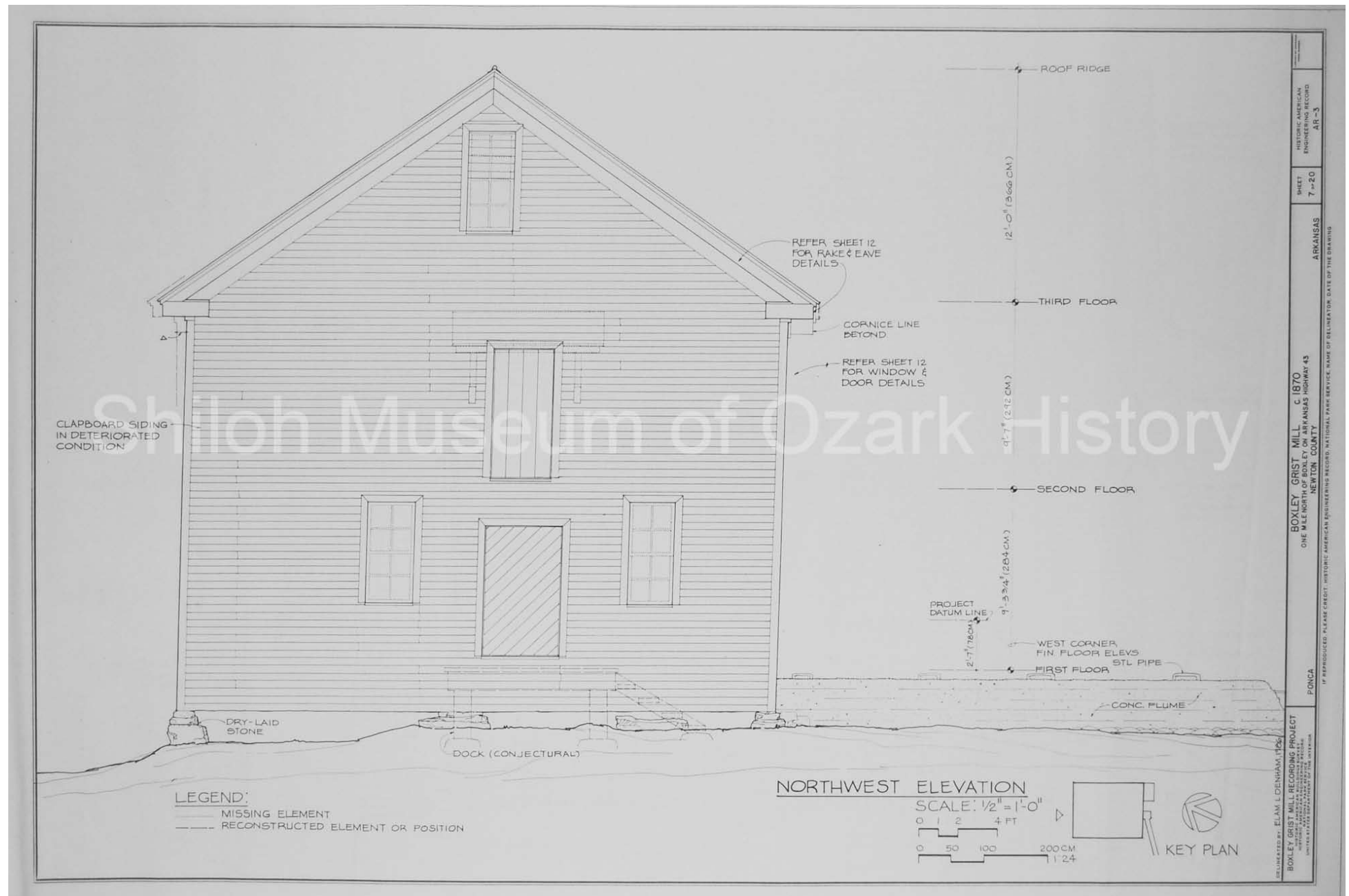
Boxley Grist Mill Recording Project, Boxley, Arkansas. Historic American Engineering Record, National Park Service.

Delineated by: Elam L. Denham, 1986. David Quin Collection (S-93-135-2)



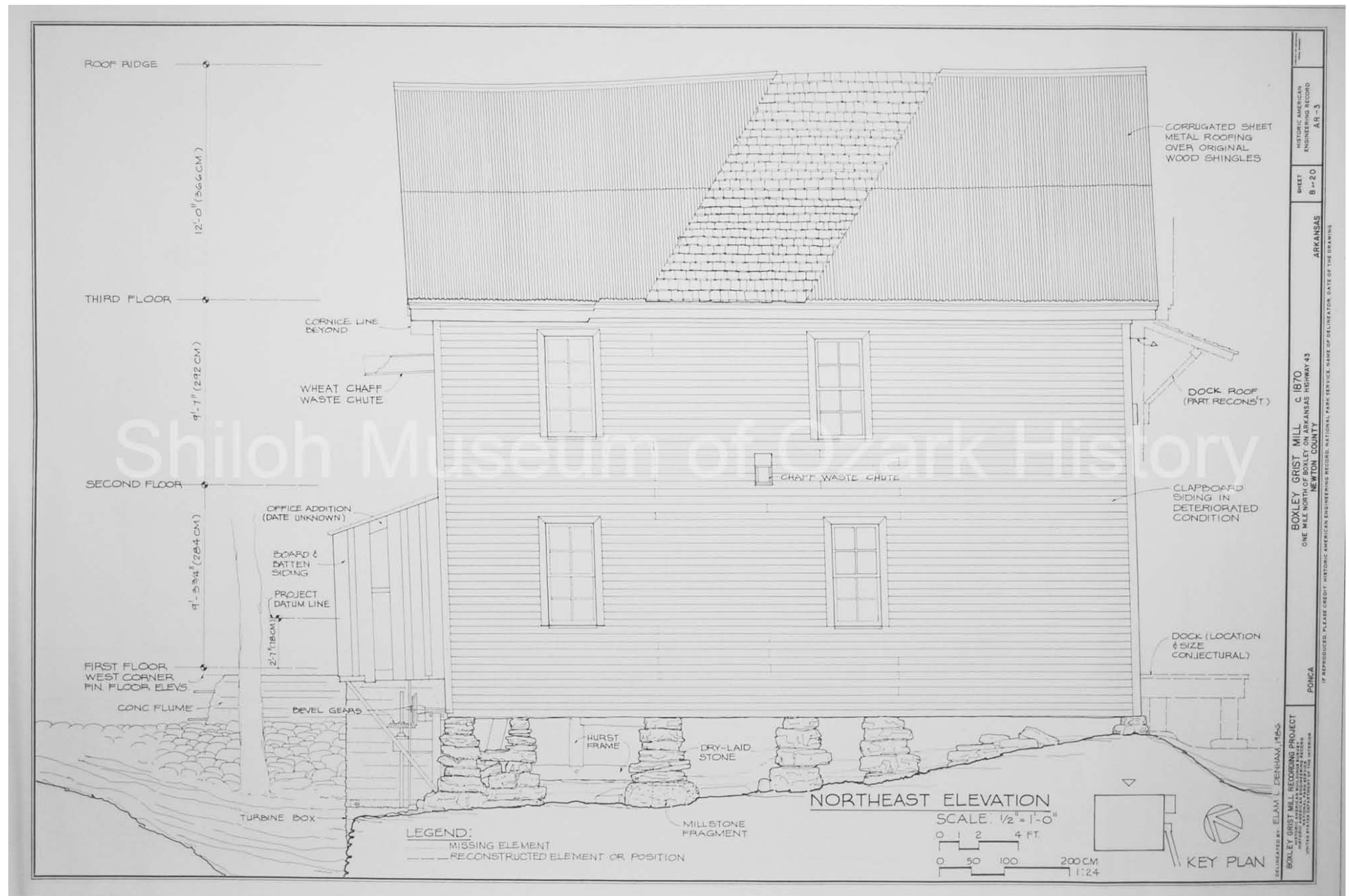
Boxley Grist Mill Recording Project, Boxley, Arkansas. Historic American Engineering Record, National Park Service.

Delineated by: Elam L. Denham, 1986. David Quin Collection (S-93-135-2)



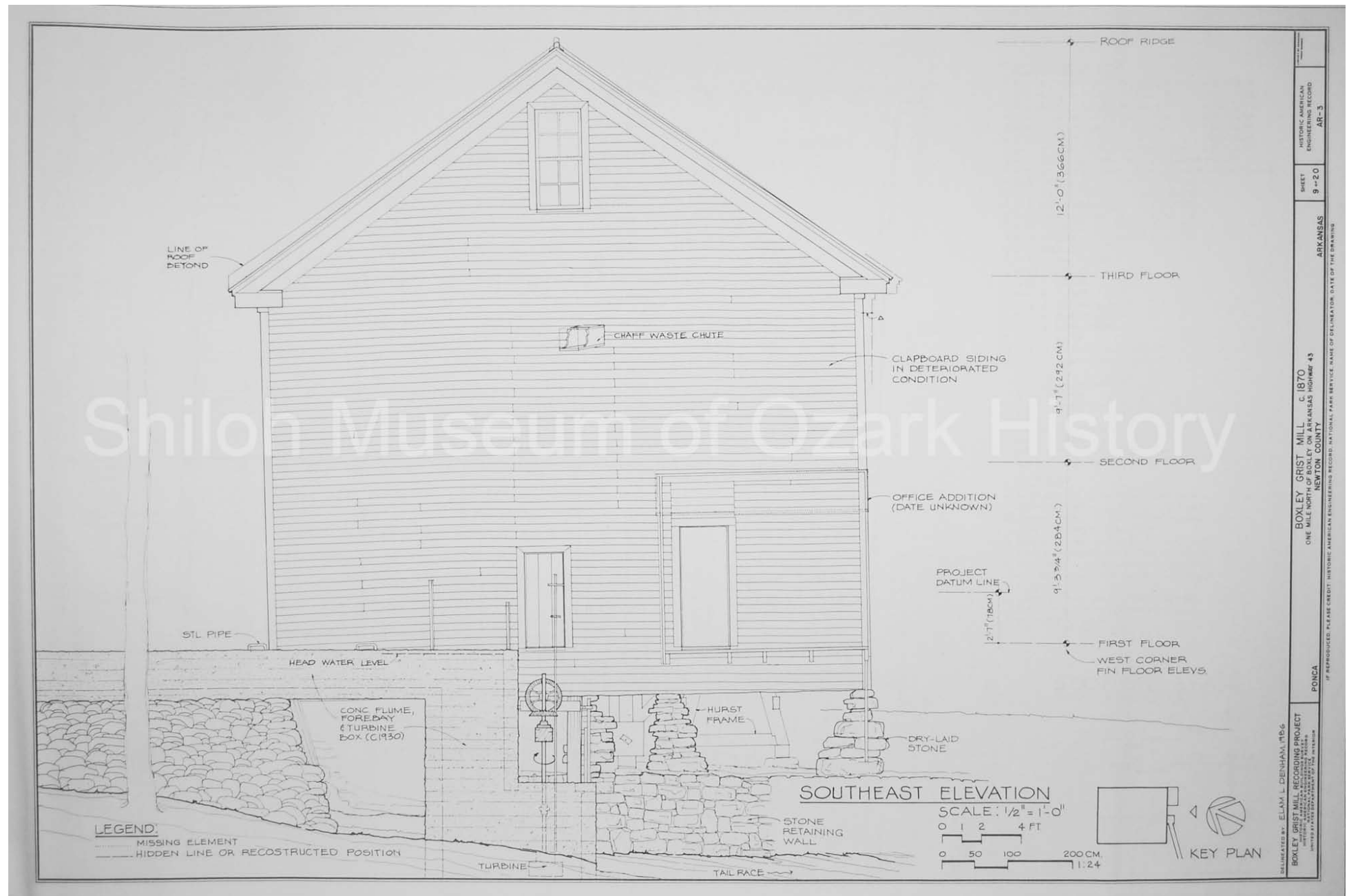
Boxley Grist Mill Recording Project, Boxley, Arkansas. Historic American Engineering Record, National Park Service.

Delineated by: Elam L. Denham, 1986. David Quin Collection (S-93-135-2)



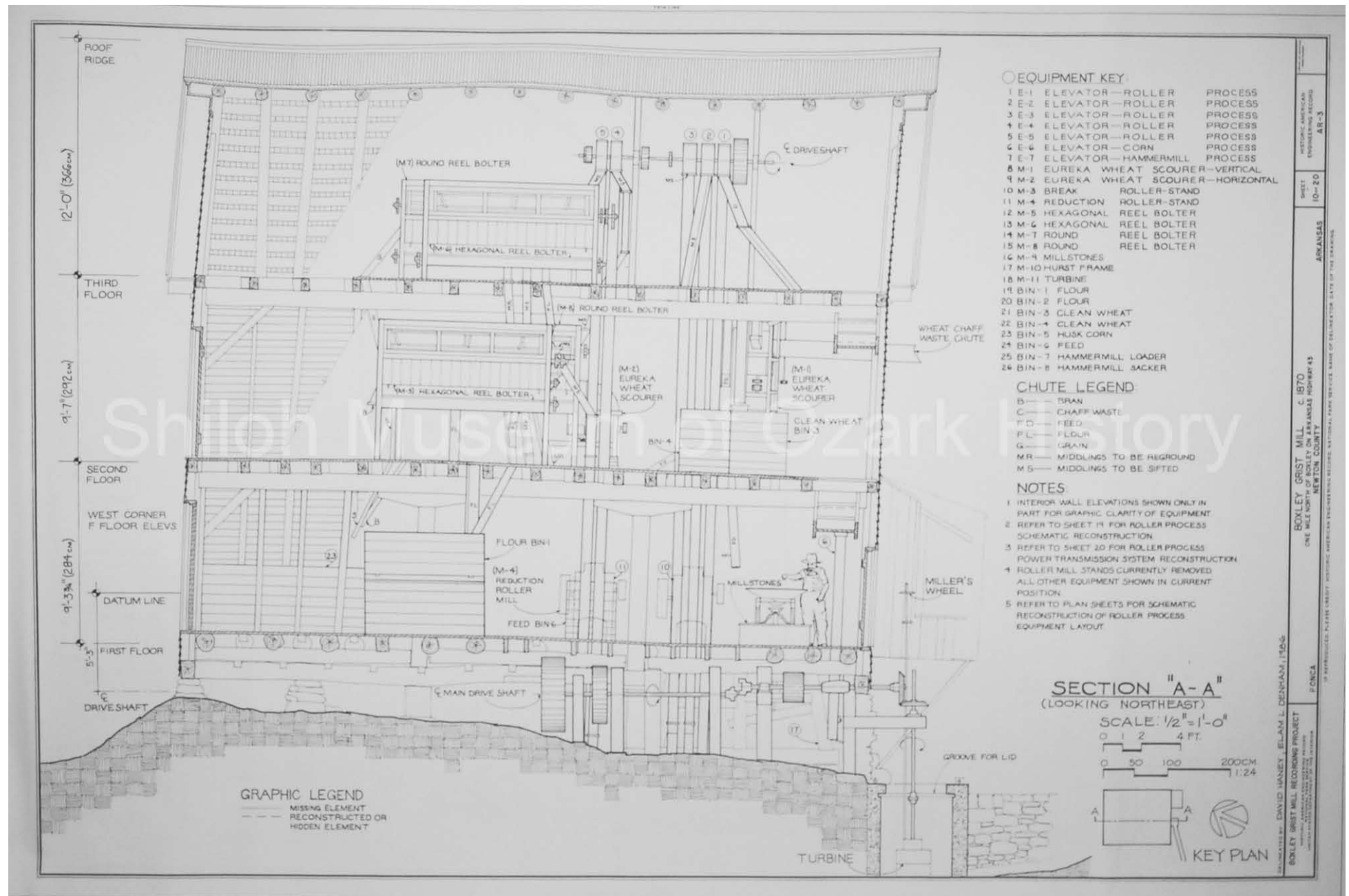
Boxley Grist Mill Recording Project, Boxley, Arkansas. Historic American Engineering Record, National Park Service.

Delineated by: Elam L. Denham, 1986. David Quin Collection (S-93-135-2)



Boxley Grist Mill Recording Project, Boxley, Arkansas. Historic American Engineering Record, National Park Service.

Delineated by: David Haney & Elam L. Denham, 1986. David Quin Collection (S-93-135-2)

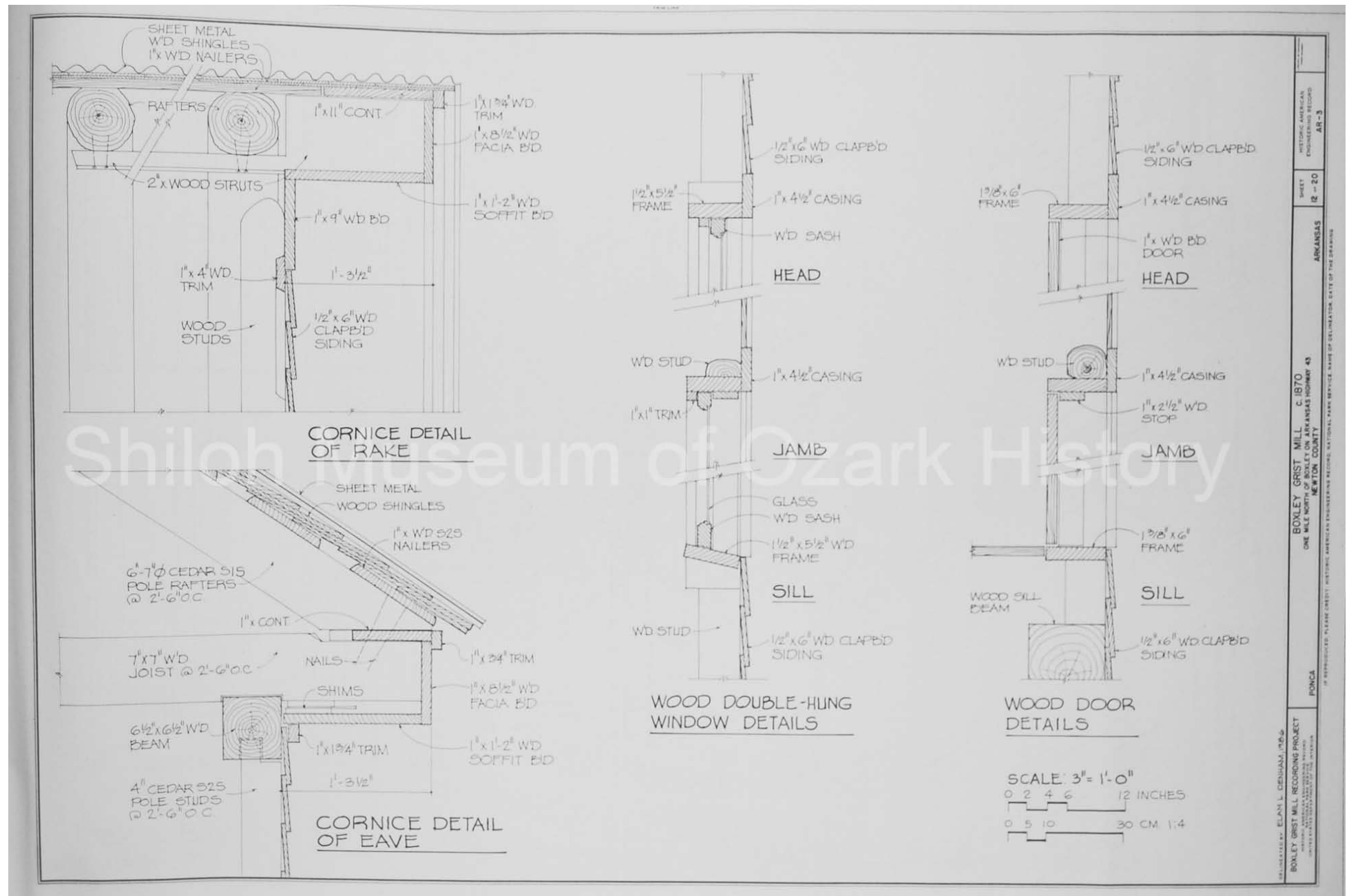


Delineated by: David Haney, 1986. *David Quin Collection (S-93-135-2)*



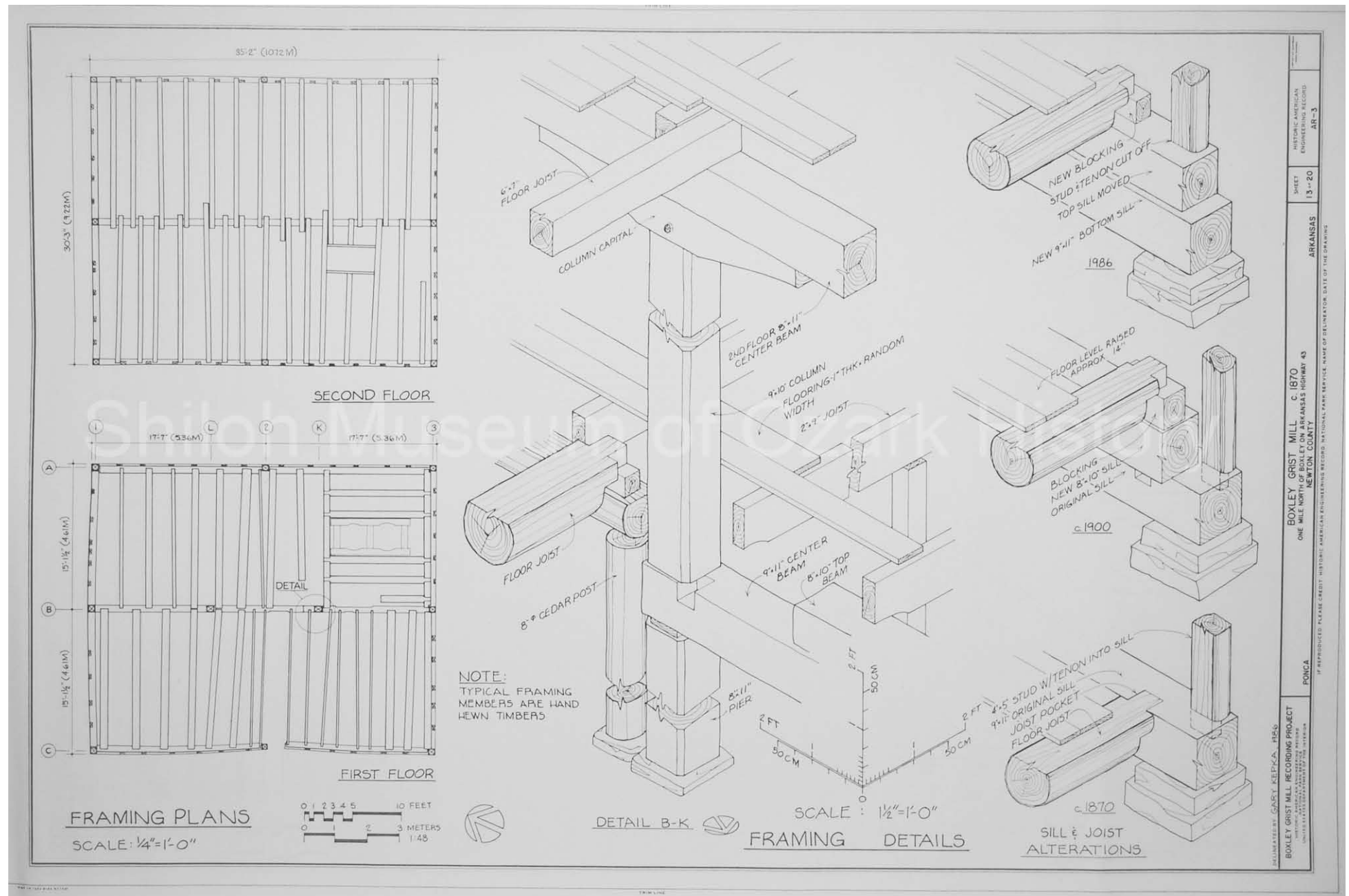
Boxley Grist Mill Recording Project, Boxley, Arkansas. Historic American Engineering Record, National Park Service.

Delineated by: Elam L. Denham, 1986. David Quin Collection (S-93-135-2)

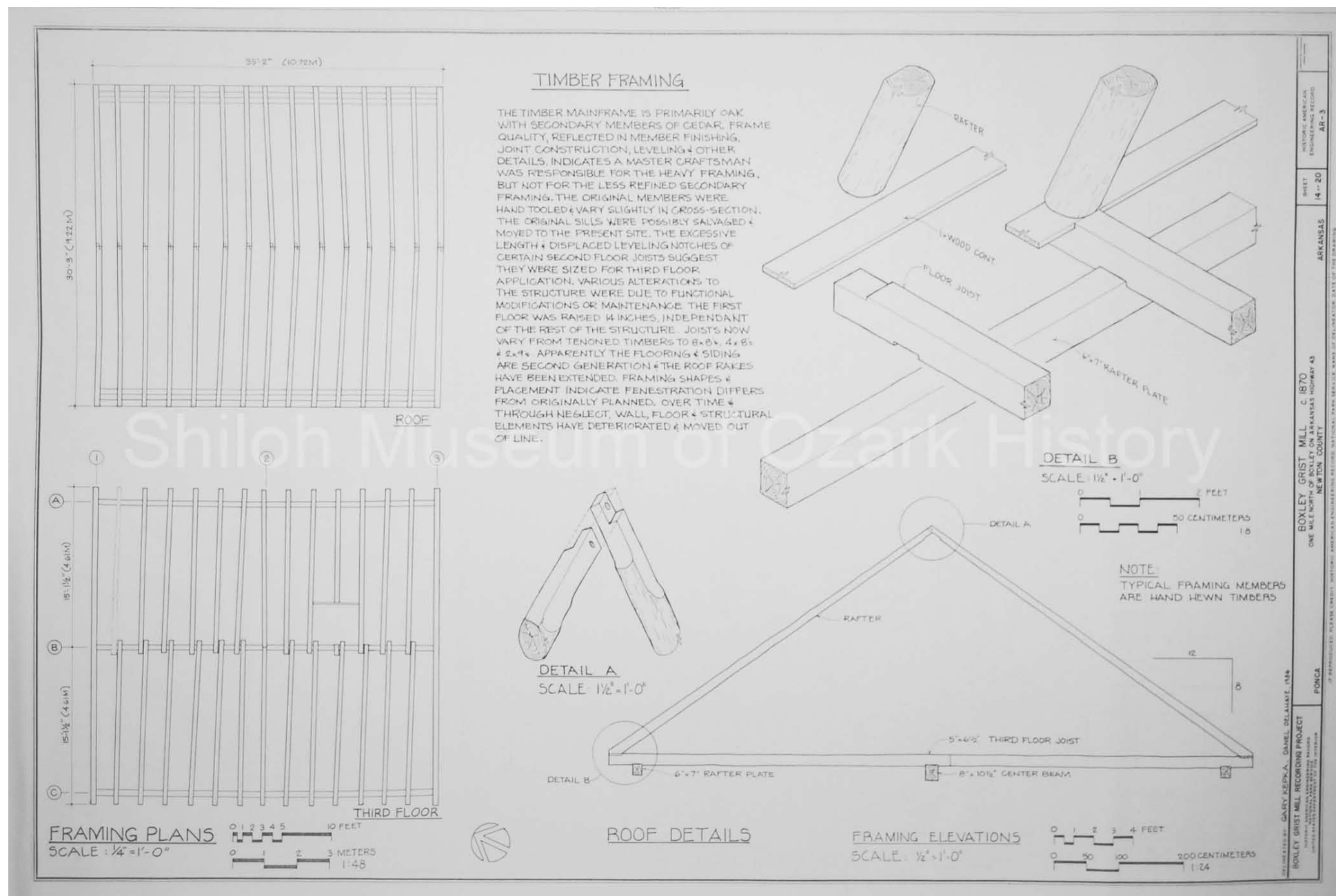


Boxley Grist Mill Recording Project, Boxley, Arkansas. Historic American Engineering Record, National Park Service.

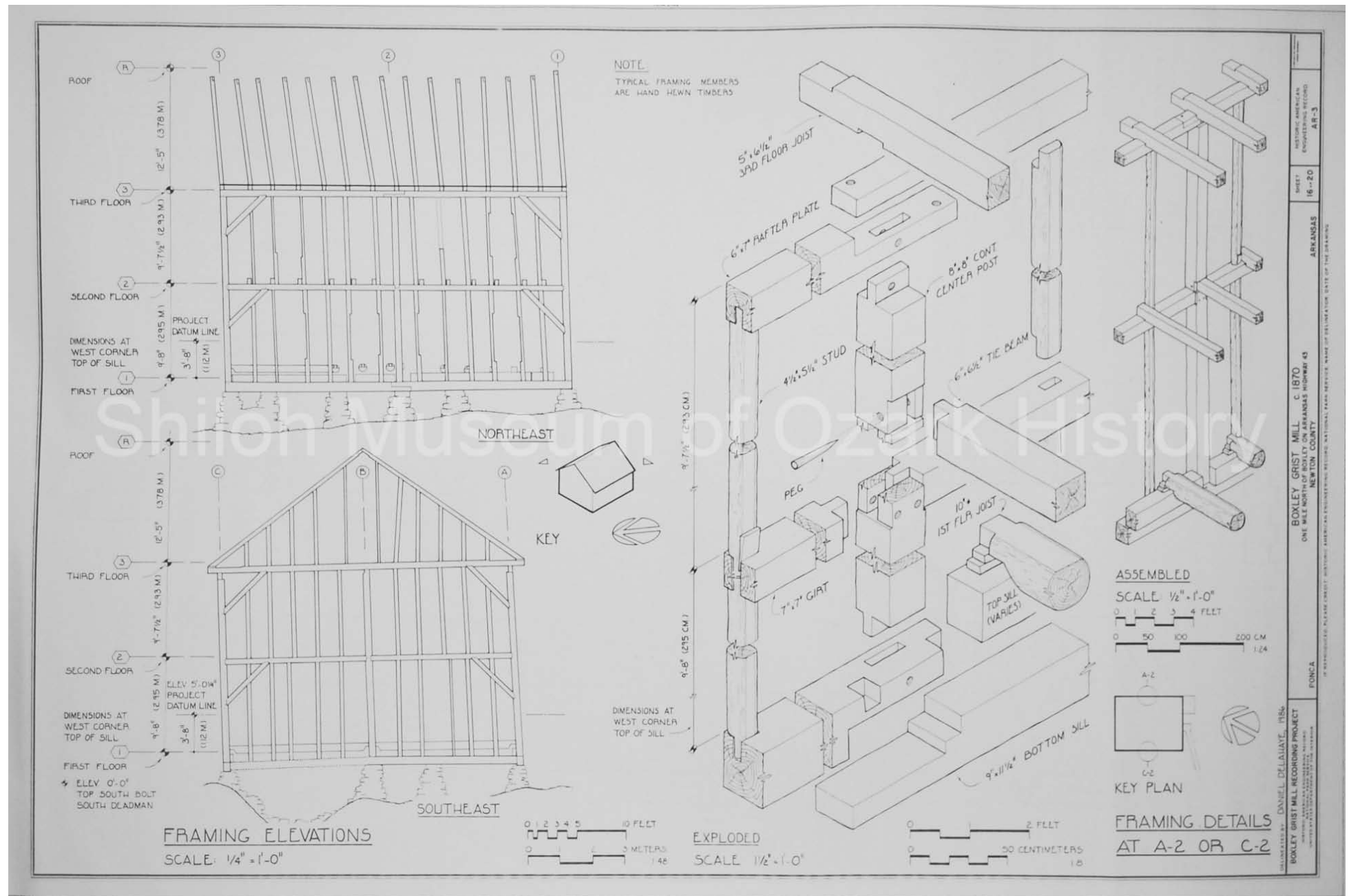
Delineated by: Gary Kepka, 1986. David Quin Collection (S-93-135-2)



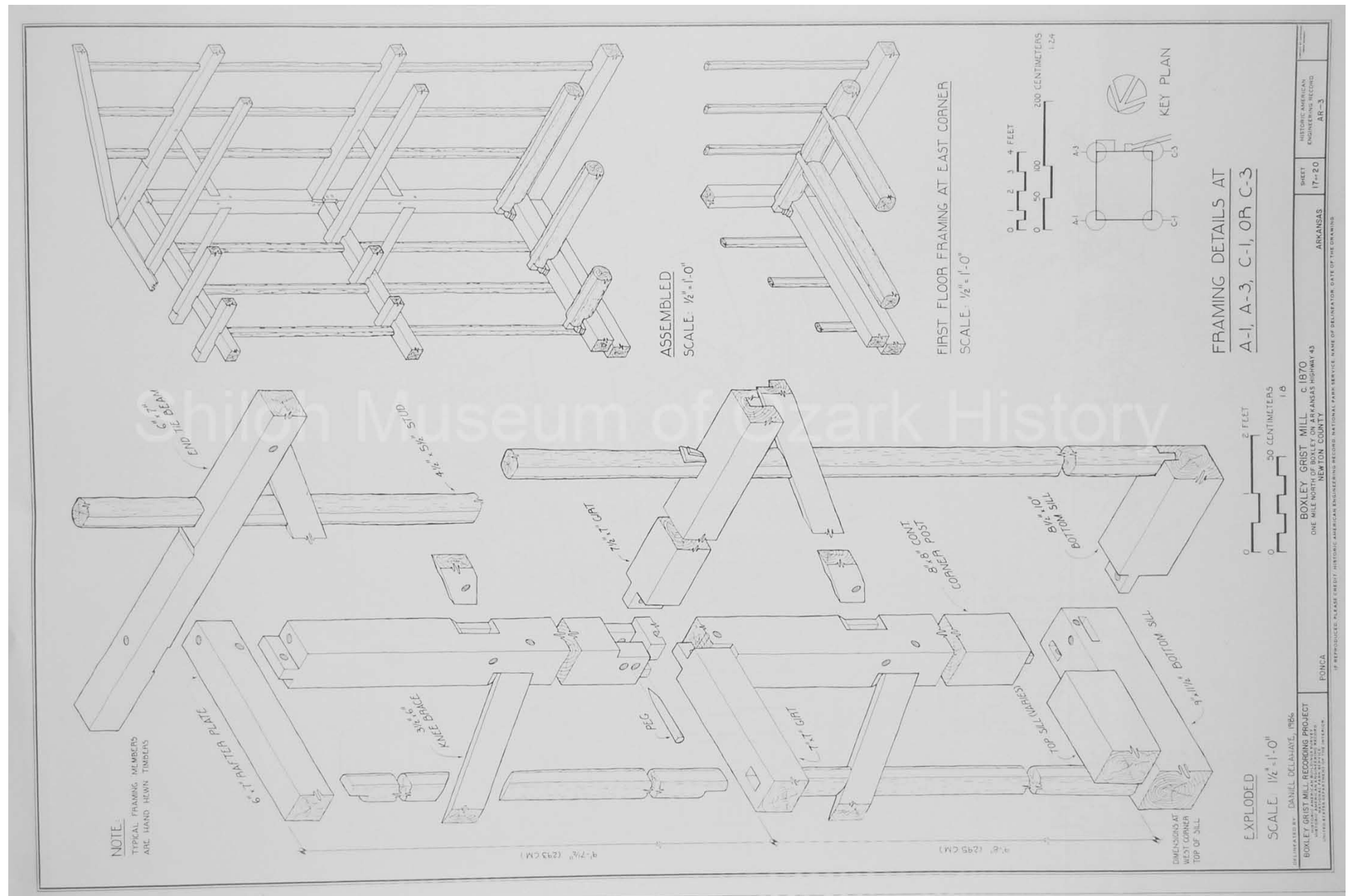
Boxley Grist Mill Recording Project, Boxley, Arkansas. Historic American Engineering Record, National Park Service.
Delineated by: Gary Kepka, 1986. David Quin Collection (S-93-135-2)



Delineated by: Daniel Delahaye, 1986. *David Quin Collection (S-93-135-2)*

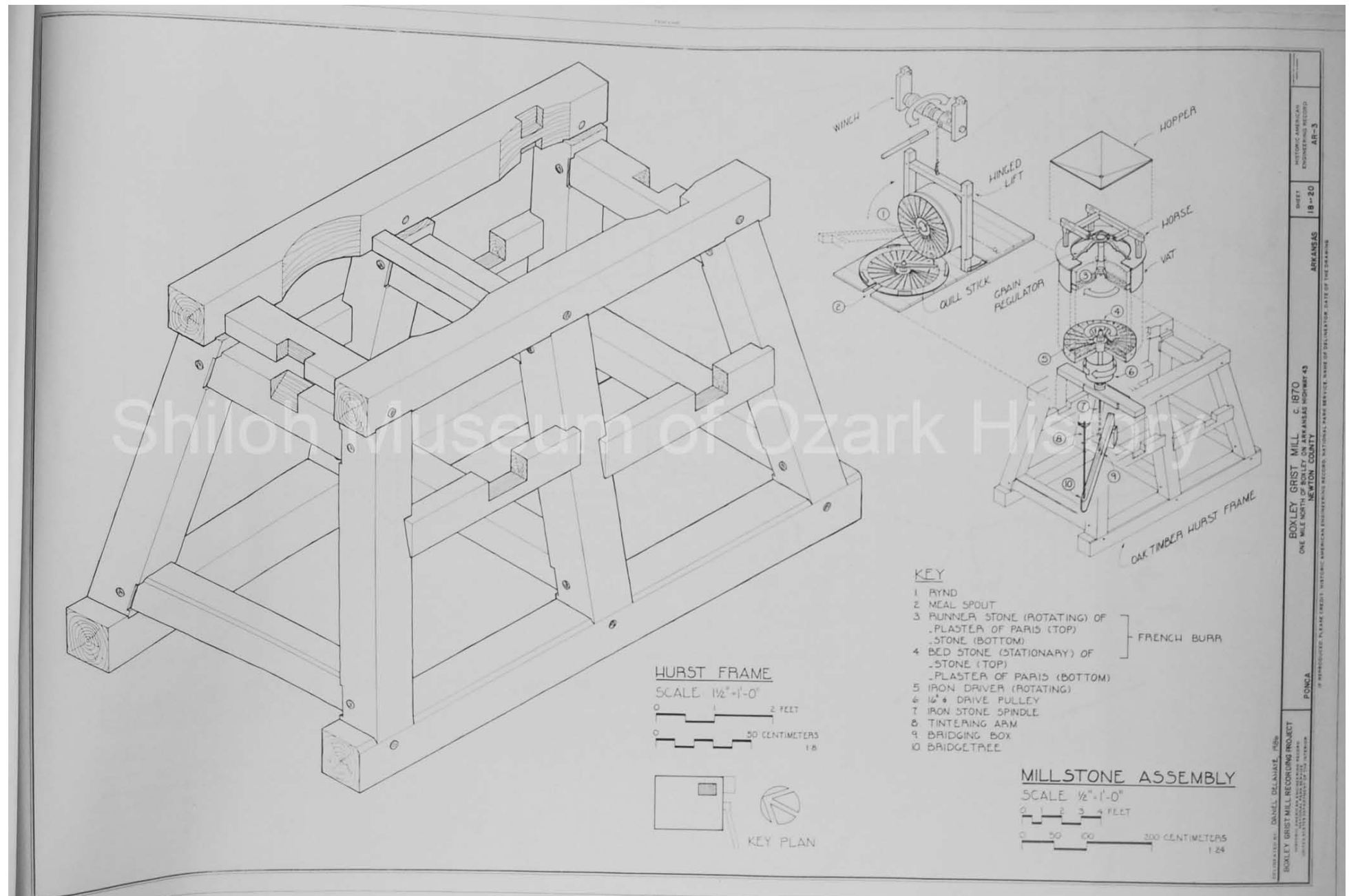


Delineated by: Daniel Delahaye, 1986. *David Quin Collection (S-93-135-2)*



Boxley Grist Mill Recording Project, Boxley, Arkansas. Historic American Engineering Record, National Park Service.

Delineated by: Daniel Delahaye, 1986. David Quin Collection (S-93-135-2)



Boxley Grist Mill Recording Project, Boxley, Arkansas. Historic American Engineering Record, National Park Service.

Delineated by: David Haney, 1986. David Quin Collection (S-93-135-2)

