

# Shiloh Museum of Ozark History

## 2019

### ANNUAL REPORT





## 2019 Financials

Revenue		Expenditures	
City of Springdale	\$831,156	Personnel & benefits	\$688,363
In-kind materials/services	28,665	Other City expenditures	142,793
Board of Trustees operating account	71,641	Board of Trustees expenditures	91,890
Board-designated funds	167,939	Board-designated fund expenditures	41,818
Grant funds	113,375	Grant projects	31,334
Museum store & Acquisitions accounts	21,758		
<b>GRAND TOTAL</b>	<b>\$1,234,534</b>	<b>GRAND TOTAL</b>	<b>\$996,198</b>

### By the Numbers



**61,117** people served in 2019, the fourth-largest number ever, including **35,050** served in person (vs. virtually), the third-largest ever

**19,283** people attended museum programs, the largest number ever, including 7,221 students onsite and 8,138 students offsite.

**26,067** virtual users, the fourth largest annual number ever

**\$17,702** in museum store sales, the second-highest annual sales ever

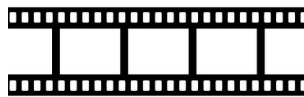


**\$1,918,802** in the museum endowment on 12/31/19



**516** volunteers worked **4,309** hours, the largest number of hours ever, valued at **\$88,291**.

**445** researchers used museum resources, including photos of 1969 UA football player Bill Montgomery for a cardboard cutout at the Sugar Bowl Hall of Fame and images of Joe Steele & Steele Canning for an exhibit, biographical film, & magazine article, all part of his induction into the Arkansas Business Hall of Fame.



**3,712** people attended **166** group meetings, the largest usage ever.

**82** collections were added, including two purchases and 59 donations.

We sponsored/hosted	# folks
107 history group meetings	1,359
29 community meetings	417
11 Shiloh Sandwiched-In programs	411
10 Shiloh Saturday programs	239
7 reunions	341
6 special programs & ceremonies	322
4 community events	187
2 Downtown Springdale Alliance events	800
2 concerts	116
1 community photo session	139

### \$80,795 in grants received

- Jones Family Foundation: History Camp scholarships
- Arvest Foundation: funding for a new photocopier
- Lowell Museum Foundation: funding for education programs
- Arvest Bank: cash prizes for annual Ozark Quilt Fair
- Walton Family Foundation: final-year funding for renovations on the Shiloh Meeting Hall



The 2nd Arkansas Symbols Day welcomed **973** students, had 52 volunteers who worked 373 hours, and took in \$3,404 in giveaways and cash.

## Major Accomplishments in 2019

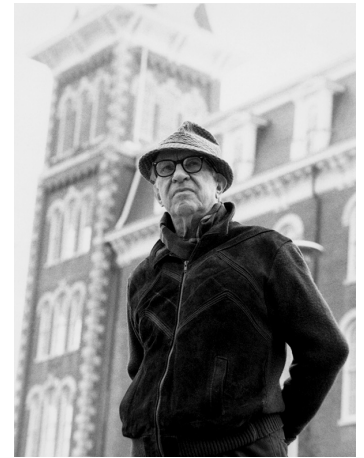
The museum went “all in” on a digitization program in 2019 to increase access to the Arkansas Ozarks history that’s available in our Image Collection (well over half-a-million images). The program will benefit researchers, students, teachers, the general public, genealogists, historians, and the cultural heritage community at large. We upgraded our photographer position to full-time, adding digitization project-manager duties, and in February hired Bo Williams for the position. During the rest of the year we began implementing our plan, purchasing equipment and software, and testing procedures.



The museum hosted a program in March to celebrate the exhibit, *Instruments of Faith: The Life and Work of Folk Instrument Maker Ed Stilley*, curated by collections and education specialist Aaron Loehndorf. Folk music duo Still on the Hill performed a short concert using handmade Stilley instruments, followed by a reception and exhibit viewing. We were indeed fortunate to have Stilley with us, at age 88. He died less than three months later. He was a true inspiration.



In 2019 the museum completed processing—after seven years of work—the donated collection of Ernie Deane, journalist, university instructor, folklorist, and historic preservationist, thanks to funding from the Deane family targeted towards the collection’s care and accessibility. The collection includes Deane’s research files, correspondence, and a complete set of his “Arkansas Traveler” and “Ozarks Country” columns, as well as associated photographs. Our thanks to cataloger Ann Schumacher for her excellent work.



The historic 1870s Searcy House has been renovated and remodeled several times over the years. Recently, the plaster ceiling in the living room had begun to crack and

bulge downward. In September we hired contractors to remove the 14x20-foot ceiling, make repairs to avoid such a problem in the future, and replaster the ceiling. With the new ceiling, we think the Searcys would be proud.

Work began on the east side of the Shiloh Meeting Hall in the riparian (streamside) area, clearing the slope of vines, some trees, and vegetation. In their place we planted native trees, shrubs, and groundcover to stabilize the hillside, provide habitat for wildlife, and absorb pollutants from runoff water before it enters the creek. On Earth Day, 23 volunteers from Tyson Foods and the Illinois River Watershed Partnership, which supplied the plantings, planted 119 trees and shrubs, covering a total of 7,860 square feet.



A single photograph—an image of the Crossbowettes, a girls’ archery team from Huntsville, in photo archivist Marie Demeroukas’ *Scenes of Madison County* exhibit—brought forth a bevy of responses from former Crossbowettes and a reunion of more than 60 members of the group in November.



# Our Partners in 2019

---

Arkansas Archeological Survey  
Arkansas Chapter Trail of Tears Association  
Arkansas Community Foundation  
Arkansas Department of Parks & Tourism  
Arkansas Historical Association  
Arkansas Humanities Council  
Arkansas Living History Association  
Arkansas Museums Association  
Arkansas Secretary of State's Office  
Arts Center of the Ozarks  
Arvest Bank  
Association for Living History, Farm, & Agricultural Museums  
Beaver Water District  
Brittany Berry & Helen Tyson Middle School EAST program  
Botanical Garden of the Ozarks  
Will Bush Violin Studio  
Chambers Bank  
Clinton House Museum  
Linda & Ken Coffee  
Collier Drug Stores  
Complete Count Committee, Springdale  
Crystal Bridges Museum of American Art  
Ernie Deane family  
Dogwood Lace Guild  
Dogwood Quilters Guild  
Domino's Pizza  
Downtown Springdale Alliance  
Elizabeth Richardson Center  
Eureka! Quilters

Feed Communities  
First United Methodist Church, Springdale  
Heritage Trail Partners  
Highland Dairy  
Hispanic Women's Organization of Arkansas  
Historic Cane Hill  
Home Depot, Fayetteville  
Illinois River Watershed Partnership  
Jones Family Foundation  
Keep America Beautiful  
Lee Elementary School EAST program  
Lewis & Clark Outfitters  
LifeWriters  
Lowell Historical Museum  
Lowe's, Fayetteville  
Marion Chapter DAR  
Marshallese Consulate General, Springdale  
McKee Foods  
Kelly & Donna Mulholland  
NWA Beekeepers Association  
NWA Civil War Roundtable  
NWA Education Service Cooperative  
NWA Handweavers Guild  
NWA History Day  
NWA Master Naturalists  
NWA Regional Planning Commission  
NWA Sacred Harp Singers  
Old State House Museum, Little Rock  
Old Time Fiddlers Association  
Osher Lifelong Learning Institute  
Ozark Folk Center State Park

Ozark Natural Science Center  
Ozark Studies Association  
Ozark Wireless Society  
Pack Rat Outdoor Center  
Peel Mansion Museum  
Photographic Society of NWA  
Plein Air Painters  
Prairie Grove Historical Society  
Ranalli Farms  
Riceland Foods  
Rogers Historical Museum  
Sam's Club, Springdale  
Smocking Arts Guild, Ozark Foothills Chapter  
Springdale Chamber of Commerce  
Springdale Kiwanis  
Springdale for Monarchs  
Springdale Public Schools  
Still on the Hill  
Tyson Foods  
UA Cooperative Extension Service  
UA Department of Geosciences  
UA Division of Agriculture  
UA Press  
UARK Federal Credit Union  
United Arkansas Federal Credit Union  
University Museum Collections  
Walton Family Foundation  
Washington County Historical Society  
Washington County Master Gardeners  
Wool & Wheel Handspinners Guild

---

## Board of Trustees

David Beauchamp, president; Jim Meinecke, vice president; Judy Van Hoose, secretary; April Rusch, treasurer, Jason House, vice treasurer. Leticia Cortez, Dr. Jami Forrester, Zessna Garcia Rios, Dr. Marian Hendrickson, Melisa Laelan, Janelle Riddle, Hank Taylor, David Whitmore

## Ex-Officio Board Members

Dr. Marsha Jones, Allyn Lord, Robert Mello, Dolores Stamps

## Life Trustees

Dr. C. S. Applegate, Dr. Dwight Heathman, Martha Lankford, Maudine Sanders, Stephen Taylor (*all deceased*)

## Staff

Allyn Lord, director; Judy Costello, education manager; Marie Demeroukas, photo archivist/research librarian; Walter Gallagher, facilities manager; Michele Gibson, receptionist/store manager; Kimberly Hosey, education specialist/weekend manager; Aaron Loehndorf, education/collections specialist; Curtis

Morris, exhibits manager; Marty Powers, groundskeeper; Carolyn Reno, assistant director/collections manager; Rachel Whitaker, research specialist; Bo Williams, photographer/digitization project manager; Susan Young, outreach coordinator

## Volunteers

Geri Alvis, Marilee Bachmann, Brad Baldwin, Renee Baldwin, Mary Ann Bardwell, Serena Barnett, Ethna Billings, Kathryn Birkhead, Reuben Blood, Mary Boetel, Jamie Bradley, Heather Burch, Pam Butler, Miriam Grace Calhoun, Ginger Candrilli, Ricky Candrilli, Carter Carrigan, Trudy Carrigan, Doris Cassidy, Trinity Castro, Karen Cordell, Heather Costello, Tom Costello, Kiersten Cross, Kyla Cross, Malachi Cross, Nathan Cross, Allison Dillingham, Emma Evans, Abigail Freeman, Henry Freeman, Oliver Freeman, Laura Gallagher, Debbie Gilmore, Martha Hamman, Donald Hendrix, Julie Herod, Seth Herod, Jerry Hilliard, Molly Hutchins, Ruth Isaac, Ann Kabanuck, Seamus Keith, Sue Kelley, Cheryl Larson, Craig

Larson, Conner LaRue, Jayne Laster, Jan Lefler, Mira Leister, Steve Lisle, Linda MacLean, Gracee Martin, Kadee Martin, Mary McCully, Pat Mills, Ashley Morris, Lona Mullins, Krystal Osbon, Liberty Osbon, Trenton Osbon, Lynn Phillips, Gail Pianalto, Tom Porter, Pam Redfern, Jacob Reinford, Tyler Reinford, Glen Robillard, Joyce Sattler, JoAnna Saunders, Ann Schumacher, Laci Shuffield, Lyle Sparkman, Martha Sparkman, Kaycee Spears, Mariette Spidel, Dolores Stamps, Truman Stamps, Jodie Standrod, Mike Standrod, Julia Stilwell, Laura Stilwell, Meredith Stilwell, Janet Tackett, Janice Torbett, Mary Vaughan, Charlie Whitaker, Richie Whitaker, Terry Whitaker, Melissa White, Annie Xu

---

## On the cover

Outreach coordinator Susan Young speaks to a group at Butterfield Trail Villiage in Fayetteville.

---