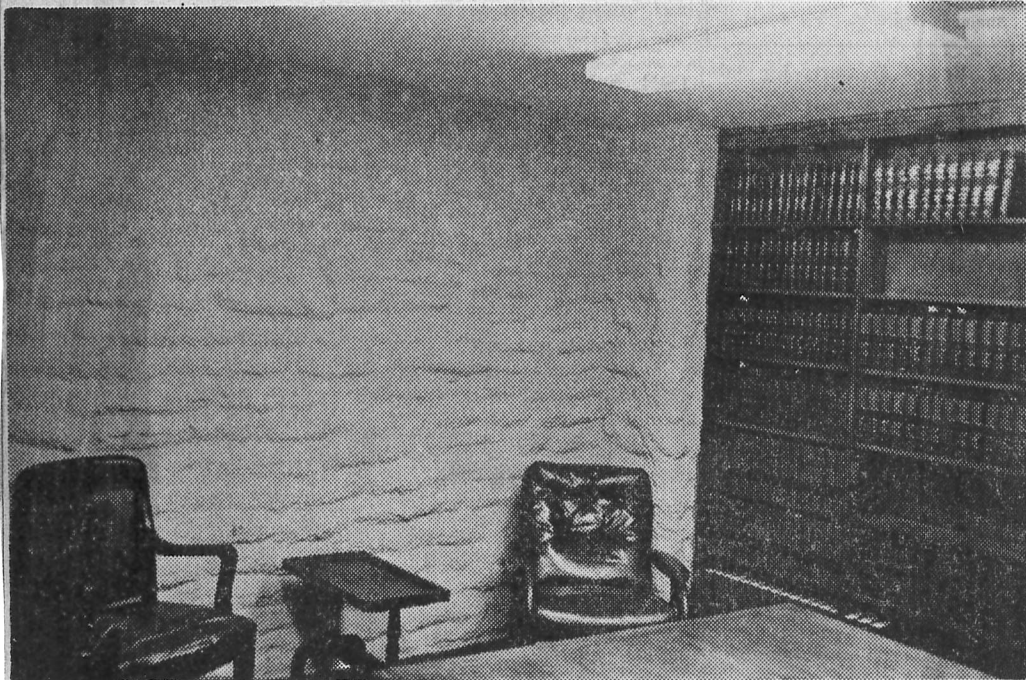


—Photos by Charles Bickford

Cement bag walls are going up.



How a room looks when it is finished.

## State's First 'Stack-Sack' Office Constructed for Springdale Lawyers

Gazette State News Service

SPRINGDALE — An office for two Springdale lawyers has been constructed in a form that is "a first" for Arkansas.

Charles Davis and Joe B. Reed wanted something different in design so they selected a "Stack-Sack" building-constructed of bags of concrete stacked on steel rods, which finally produce a solid masonry look.

Although the building boggled sidewalk superintendents during its early stages, F. J. McCourt of Springdale, whose construction company here hold the Stack-Sack franchise for nine Northwest Arkansas counties, said that the method has been successful in other parts of the nation.

McCourt thinks it will be the "going thing" for motels, apartment houses, warehouses as well as private homes.

The construction enables a builder to use unskilled labor, thus saving costs, McCourt said. He said a person wanting a Stack-Sack home could do some of the labor himself in lieu of a down payment.

Construction time also is short, he said. For example, he said, a three-bedroom home with central heating and air conditioning, carpeting and cabinets can be built in 30 days with good weather conditions.

### Now Building First House

McCourt is now building his first house here, a three-bedroom home.

Construction at the beginning is similar to other methods, starting with the pouring of footings and a slab with plumbing installations.

The look becomes different as the walls, constructed of burlap bags, six inches in diameter, 24 inches long and weighing about 40 pounds each, go up. The bags are filled automatically with concrete of 3,000-pound test, mixed at the site of the building.

McCourt explained that each bag is set on two 10-inch steel re-inforced rods that protrude two inches above and below the bag. The rods are staggered so that each bag is set on four

rods. Electrical conduits are placed during the stacking process.

### Walls Sprayed With Cement

When the walls are at the required height, three coats of masonry cement are sprayed on the outside under pressure. The finish application can be rough or smooth for the exterior and interior and the interior can be paneled. The outside finish coat can also be pre-colored at the time it is sprayed. Fireproof

sheet rock is used overhead.

McCourt said that this type of construction is strong, fireproof, vermin-proof, sound-proof and easy to maintain.

During the construction of the office building, a number of contractors around the state came to see it.

McCourt, came to Springdale 11 years ago after retiring from the railroad and trucking business. Five years ago he went into the construction business and developed two residential areas here.